

# ELAN-Cast® and ELAN-Tron® resins for **Assembly**

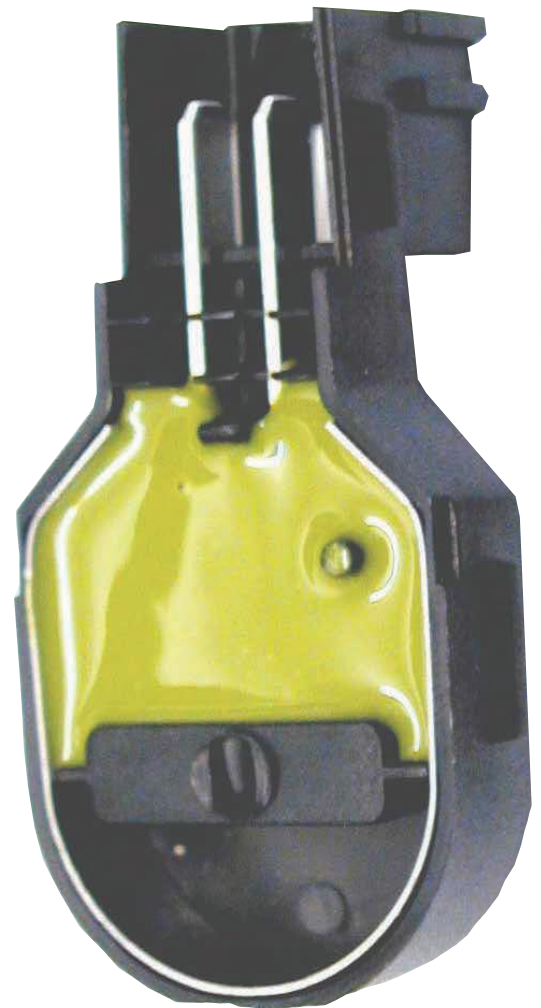
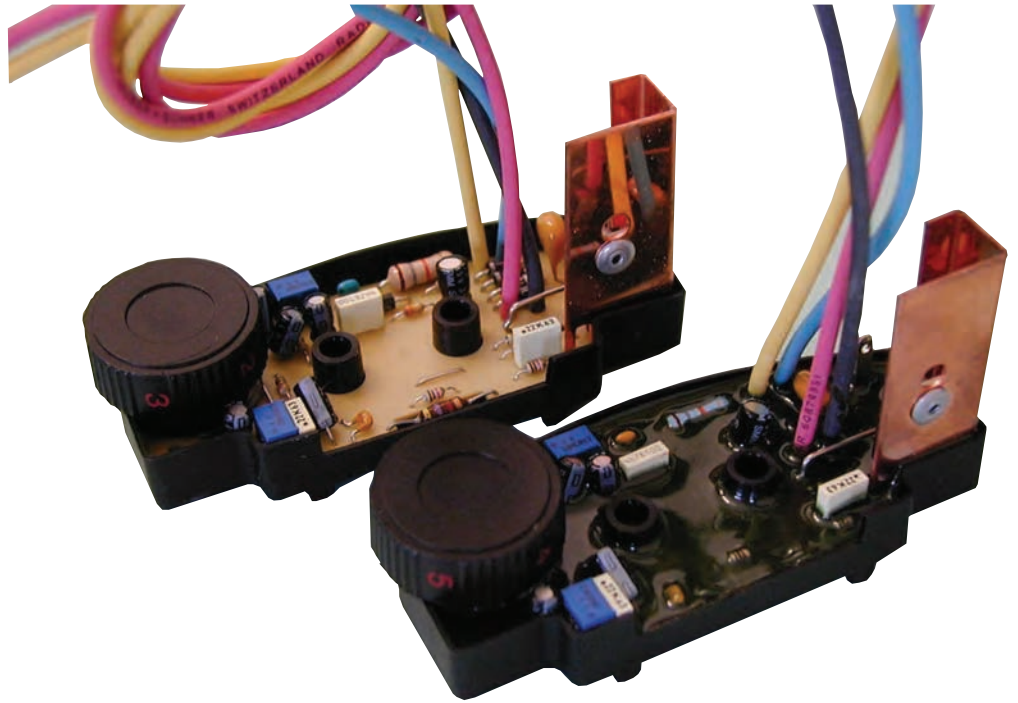
# Assembly

## Product Summary

ELAN-Cast® E,  
ELAN-Cast® P and  
ELAN-Tron® U resins  
provide mechanical stability  
with low shrinkage and  
excellent adhesion to plastic  
and metal substrates.

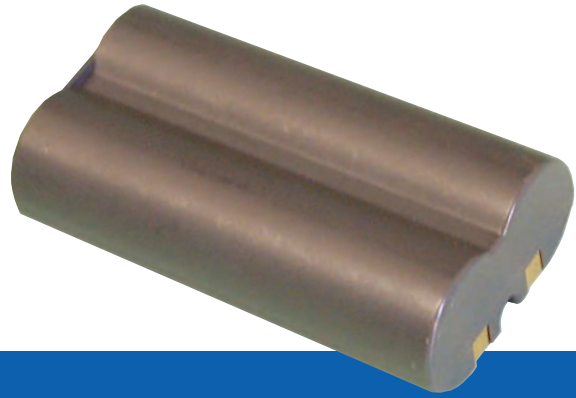
## Product Uses

- Wire Harnesses
- Battery Potting
- OLED Sealants
- Cable Joints
- Connectors
- Relays



# Application Methods

- Vacuum Potting
- Meter-Mixing
- Atmospheric Potting



## Product Characteristics at a Glance

		Mixed Viscosity cP @ 25°C	Mix Ratio (by weight)	Glass Transition Temp (Tg)	Shore Hardness	Gel Time at 25°C (minutes)	Cure Schedule for Optimum Properties	Maximum Service Temp (IEC 60085)
ELAN-Cast® P 300 S RTC ELAN-Plus™ C 8 Catalyst	Two-component, unfilled, very flexible polyester resin system. Room temperature / low heat cure. Moisture-resistant. UL system listed.	100 - 200	100 : 1	20 - 30°C	60 - 80 A	35 - 50	24 h at 25°C or 2 h at 80°C	180°C
ELAN-Tron® U 510S Brown Resin ELAN-Tron® UH 510S Hardner	Two-component, unfilled polyurethane resin system. Room temperature / low heat cure. Flexible to -40°C or below. Designed for automotive applications. Resistant to hydrolysis (85°C / 85% RH).	3200 - 4200	100 : 24	< -60°C	50 - 60 A	20 - 25	72 h at 25°C or 2 h at 80°C	130°C
ELAN-Cast® E 57 Red Resin ELAN-Cast® C 226 Hardener	Two-component, filled, rigid epoxy resin system. Room temperature / low heat cure. Low mix viscosity. Autoclavable.	800 - 1300	100 : 12	58 - 63°C	83 - 88 D	10 - 20	72 h at 25°C or 2 h at 80°C	155°C
ELAN-Cast® E 297 Resin ELAN-Cast® C 85 Hardener ELAN-Cast® C 110 Hardener ELAN-Cast® C 46 Hardener	Two-component, filled, rigid resin system. Room temperature / low heat cure. Available in natural and black. Low pouring viscosity. Range of gel times available depending on choice of hardener.	1500 - 2500 1500 - 2500 1500 - 2500	100 : 20 100 : 20 100 : 20	47 - 53 °C 45 - 50 °C 53 - 57 °C	80 - 85 D 80 - 85 D 80 - 85 D	10 - 15 35 - 45 270 - 330	24 h at 25°C +15 h at 60°C	155°C 155°C 155°C
ELAN-Cast® E 210 Green Resin ELAN-CAST® E805 Black Resin ELAN-Cast® C 383 Hardener	Two-component, semi-rigid epoxy resin system, available in black or green. Room temperature / low heat cure. For encapsulation of transformers or potting of connectors or wiring harnesses.	600 - 1000	100 : 17	40 - 45 °C	73 - 77 D	70 - 90	24 h at 25°C +15 h at 60°C	130°C
ELAN-Cast® E 4260 Black Black Resin ELAN-Cast® C 321 Hardener	Two-component, filled, epoxy resin system. Room temperature / low heat cure. High thermal conductivity. Suitable for use at Class H temperatures.	1500 - 2500	100 : 10	55 - 60 °C	85 - 90 D	400 - 500	24 h at 25°C +15 h at 60°C	180°C

Alternate cure schedule may be possible for your application. Consult with your ELANTAS PDG representative.

For More Information Ask For Our Technical Data Sheets.

# ELANTAS PDG, Inc.

## ELANTAS Electrical Insulation

Around the world, ELANTAS Electrical Insulation companies are respected as market leaders in the development and manufacturing of impregnating resins (varnishes), wire enamel, potting compounds and casting resins for a number of electrical, industrial, aerospace and civil applications. No matter what your challenge, be assured that ELANTAS Electrical Insulation products will meet your most demanding needs.

## ELANTAS PDG, Inc.

Today, ELANTAS PDG, Inc. is recognized as the premier global supplier of specialty polymers for the electrical and electronic industries. ELANTAS PDG, Inc. is a member of ALTANA's ELANTAS Electrical Insulation Division based in Wesel, Germany.

With the support of ALTANA and by working with other ALTANA divisions, we offer a unique global approach to research, manufacturing and service that translates into more creative solutions, dependable supply and consistently high quality.

Many ELANTAS PDG, Inc. products are recognized as components of electrical insulation systems in accordance with UL 1446. ELANTAS PDG, Inc. is registered to ISO 9001 and ISO/TS 16949.

## ELANTAS PDG, Inc.

5200 North Second Street  
St. Louis, MO 63147 USA

**Tel 314.621.5700**

**Fax 314.436.1030**

info.elantas.pdg@altana.com  
www.elantas.com

A member of  **ALTANA**



ELANTAS PDG, Inc. headquarters in St. Louis, Missouri

ELANTAS Electrical Insulation companies are strategically located throughout the world to meet the primary insulation, secondary insulation and electronic and engineering materials needs of our customers.

### AMERICAS

ELANTAS PDG, Inc.  
ELANTAS Isolantes,  
Electricos do Brasil

### ASIA

ELANTAS Beck India  
ELANTAS Tongling  
ELANTAS Zhuhai

### EUROPE

ELANTAS Beck  
ELANTAS Italia

 **ELANTAS**  
Electrical Insulation